

Balling Machine

Model : WFPMDB03

The ABM balling machine delivers rounded balls and enables you to be able to achieve portion control every time. Quick and easy portion control adjustment helps to make up to 4000 balls /hour.

The conveyor is designed in such a way that it maintains the shape of the balls whilst delivering them to a working height. It has a small footprint which makes it ideal to store when not in use. The machine can be used standalone but ideally in conjunction with the Wedderburn WFP2013 forming machine to ensure your portion consistency.

FEATURES

- robust stainless steel construction
- smaller footprint
- portion controlled balls up to 4000/hr
- easy adjustment for portion size from 22mm up to 35mm
- water resistant to IP54 standard
- variable rolling speeds
- adjustable water feed for lubrication

OPTIONAL BALLING KITS

- 28mm baller kit (Order Code RD0550)
- 35mm baller kit (Order Code RD0552)
- 25mm baller kit (Order Code RD0549)



Specifications may change without notice

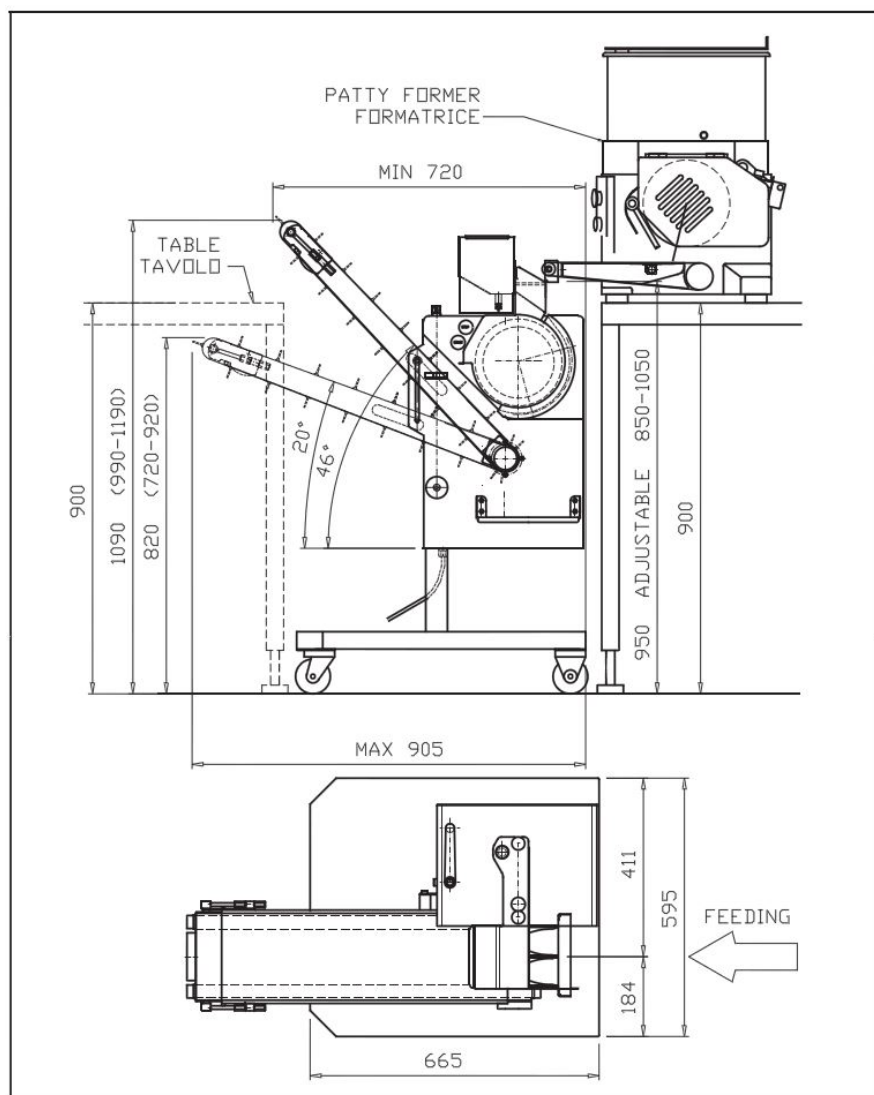
FOOD EQUIPMENT

Balling Machine

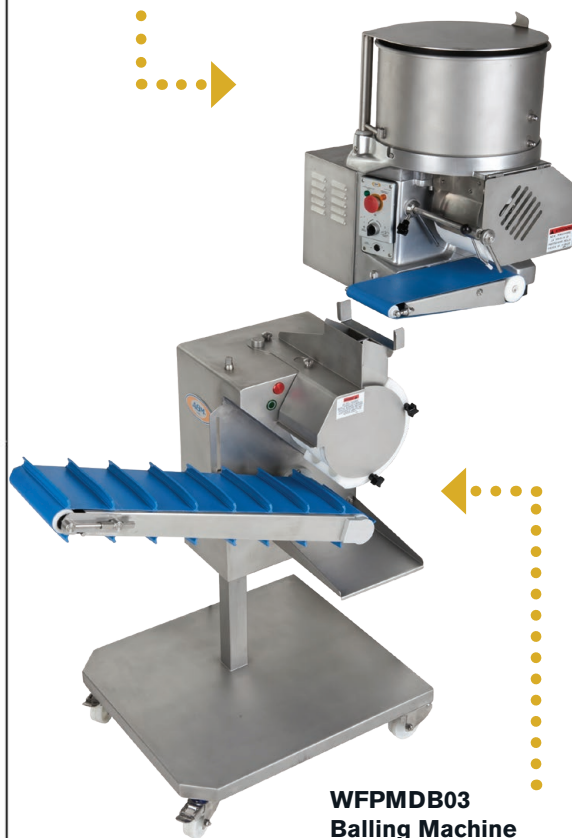
Model : WFPMDB03

SPECIFICATIONS

Overall Dimensions (mm)	595 (W) x 875 (D) x 1185 (H) (Height is adjustable from 610 mm)
Electrical Specification	10 A, Single Phase Plug
Net Weight (kg)	70



WFP2013
Patty Forming Machine



WFPMDB03
Balling Machine

FOOD EQUIPMENT

LABELS | LABELLING EQUIPMENT | PACKAGING EQUIPMENT
ESL & DIGITAL SIGNAGE | WEIGHING SCALES | POS SYSTEMS
FOOD EQUIPMENT | MAINTENANCE & REPAIRS | HIRE

Specifications may change without notice

1300 970 111
enquiries@wedderburn.com.au
www.wedderburn.com.au